

HOME & BUSINESS

Setup content advisor

How to setup a content filter on
your MS Internet Explorer
browser.

Telkom

MS Internet Explorer

Content Advisor

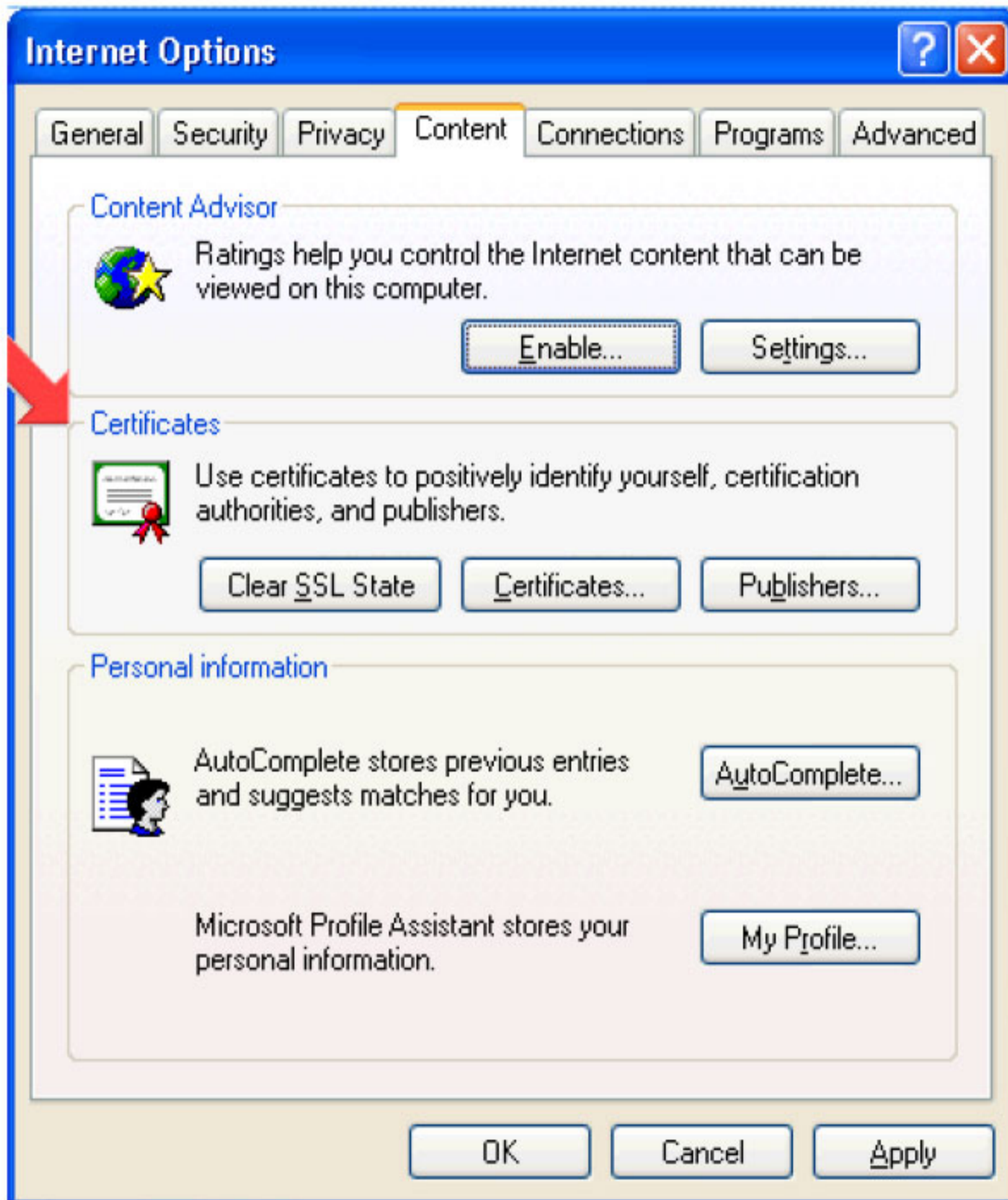
Step 1 of 4:

Here you can choose which kind of material can be viewed on your computer from the Internet. You can filter strong language, nudity, sex etc.



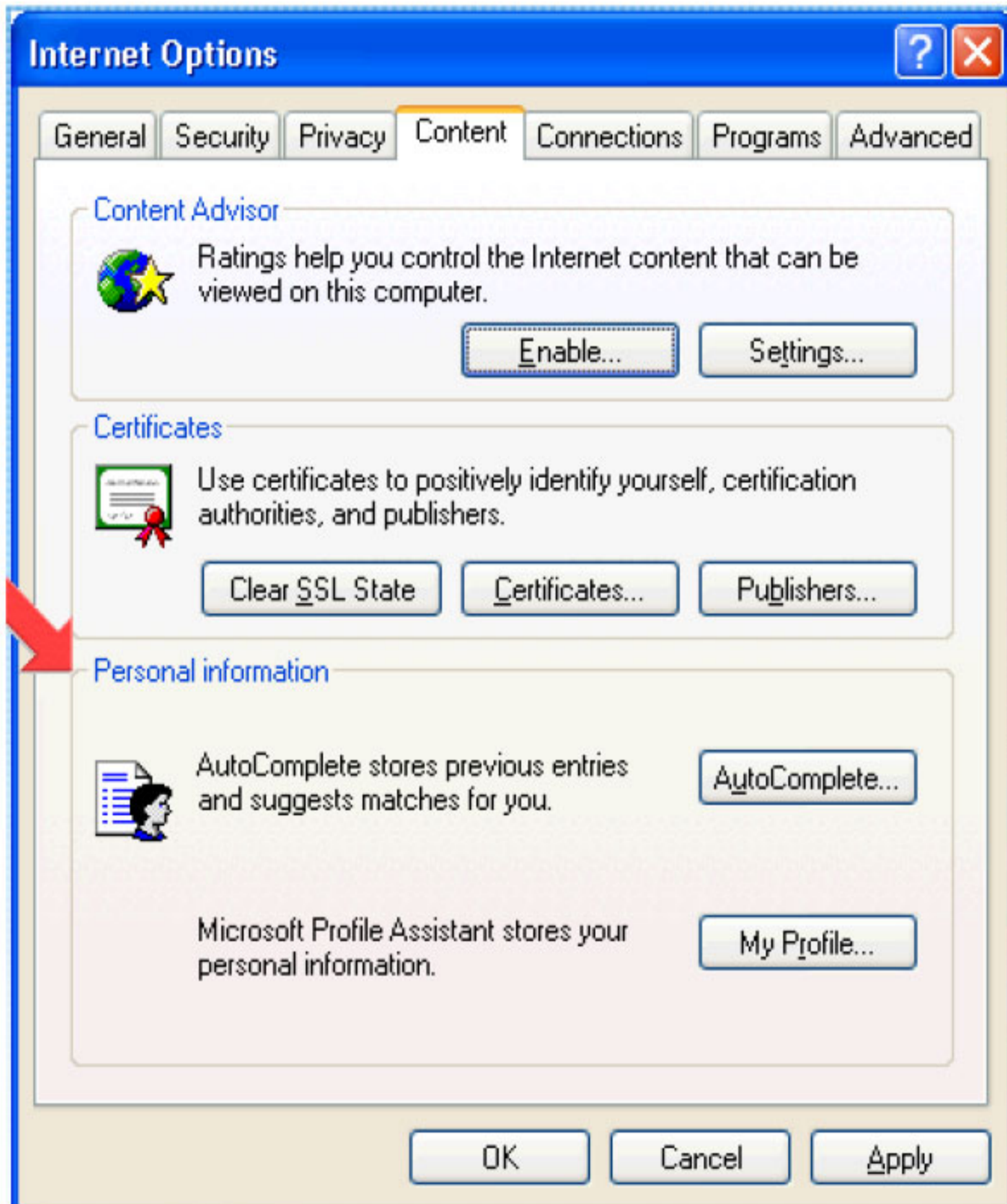
Step 2 of 4:

An SSL Certificate is used to identify yourself to other computers. Here you can change and view your Certificates.



Step 3 of 4:

Here you can enter and change your personal information.
Some websites require identification from computers visiting the site.



Step 4 of 4:

Click on the "Connections" tab.

