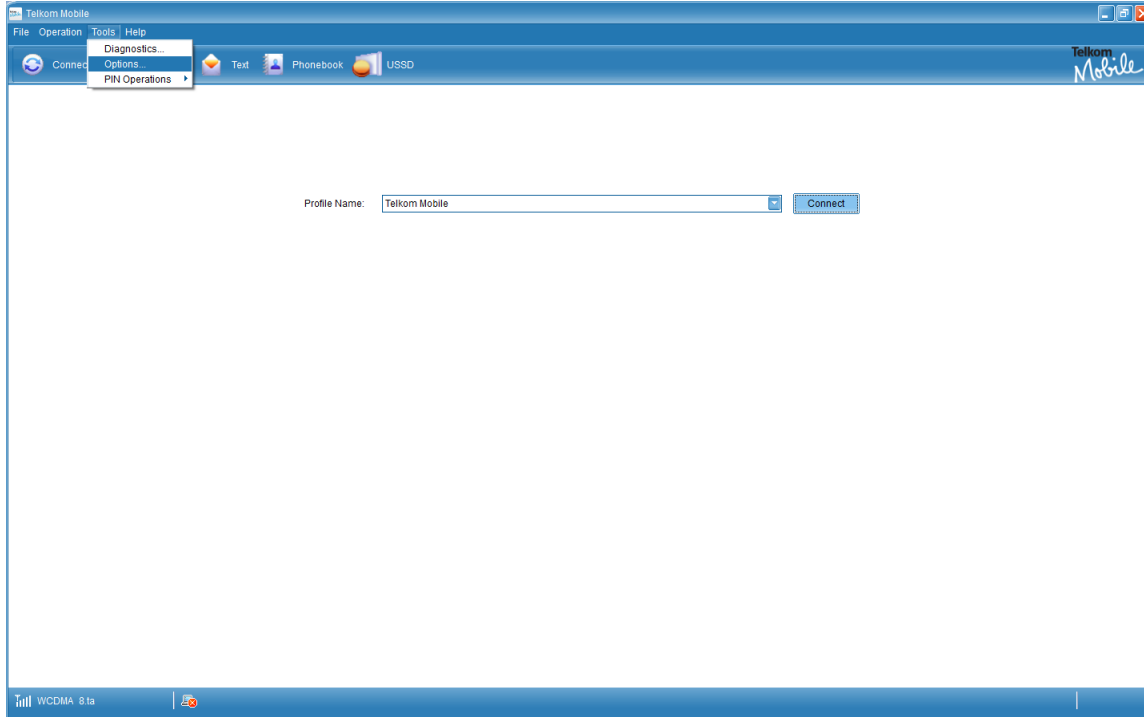
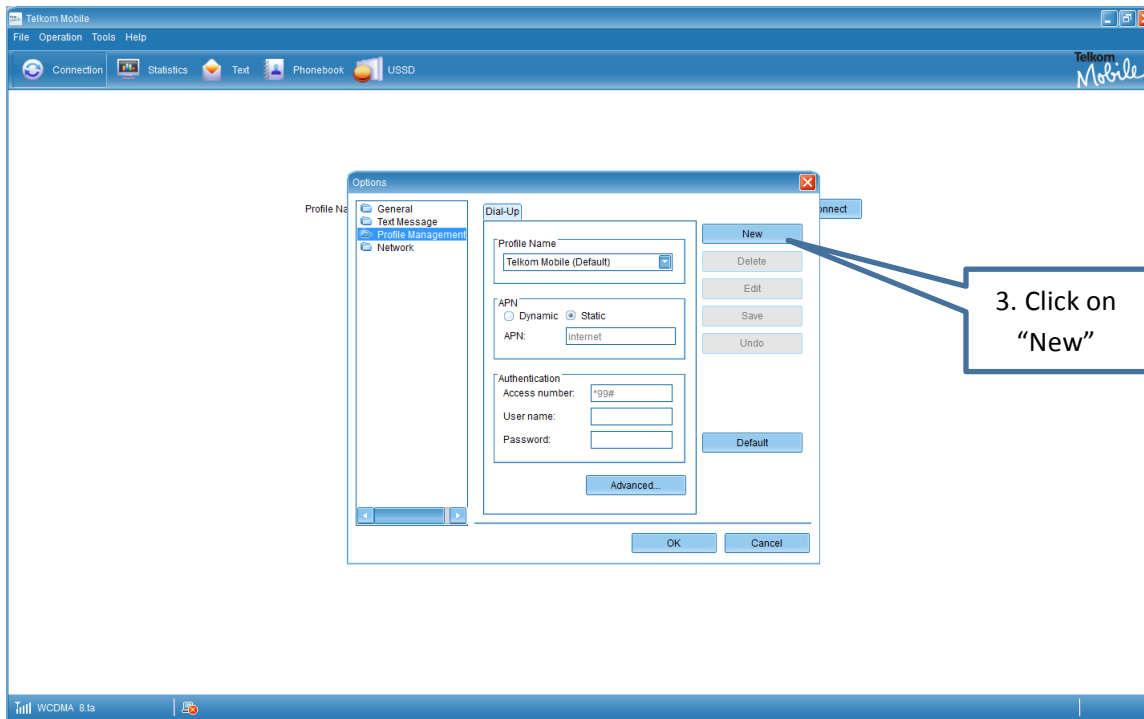


How to setup the profile for Huawei E3272 LTE and E3531

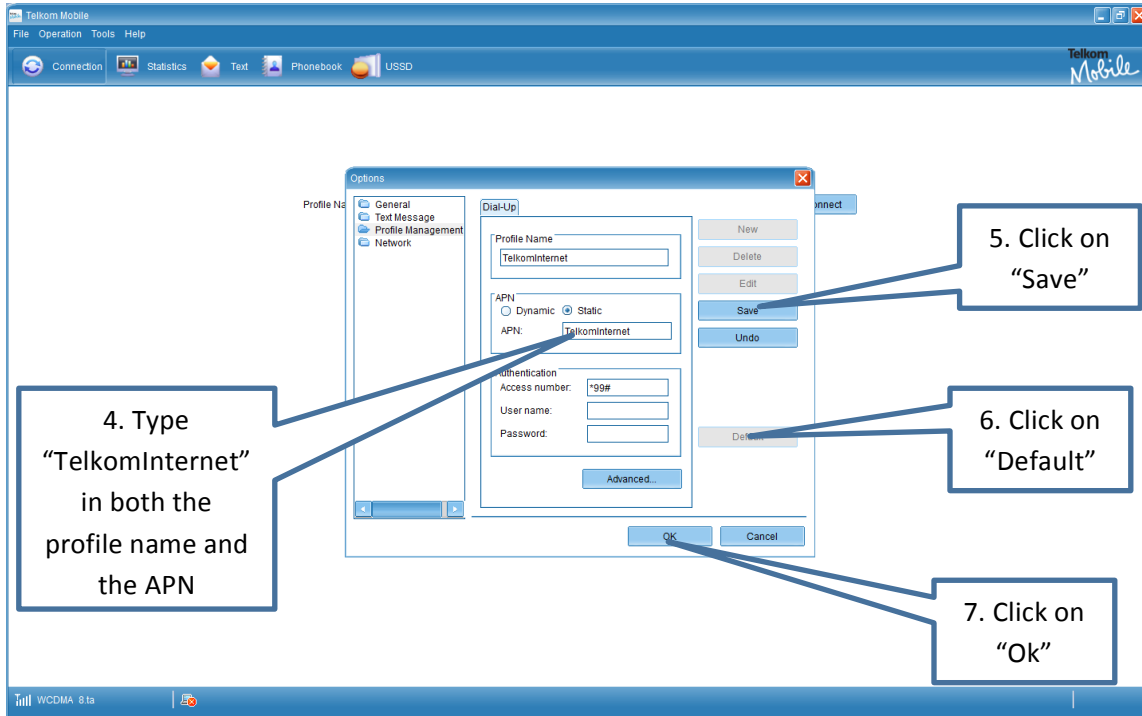
1. Click on "Tools"
2. Click on "Options"



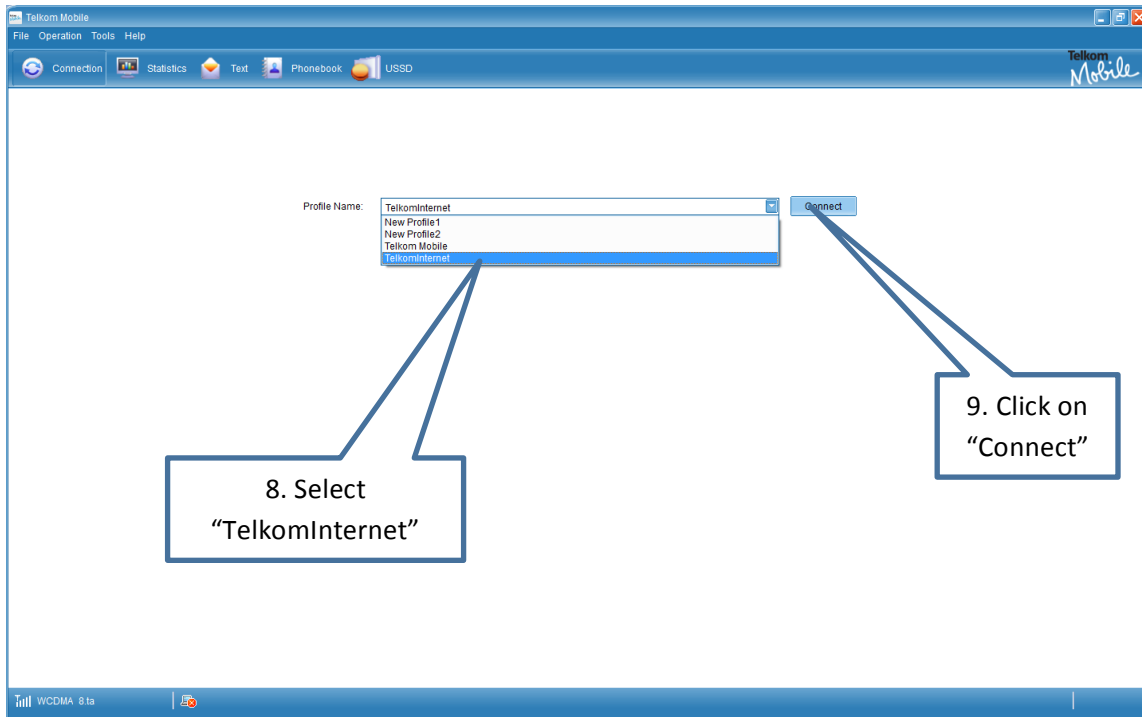
3. Click on "Profile Management"



4. "TelkomInternet" in both the profile name and the APN
5. Click on "Save"
6. Click on "Default"
7. Click on "Ok"



8. Select "TelkomInternet"
9. Click on "Connect"



You can now browse the internet...