

HOME & BUSINESS

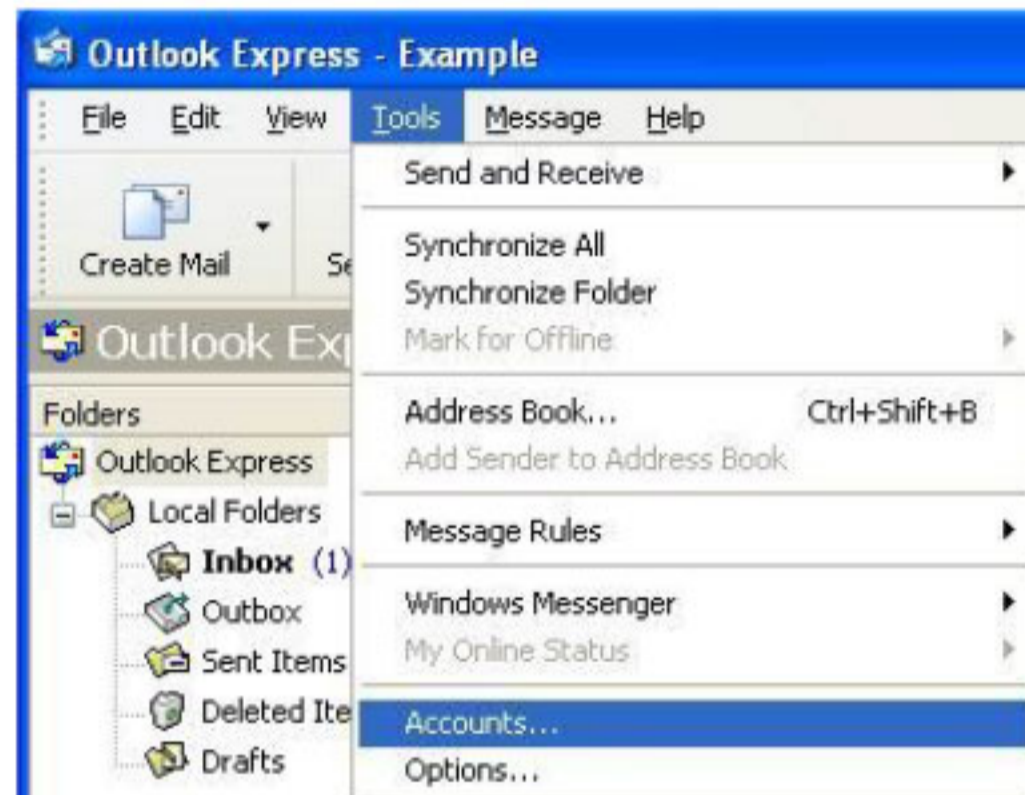
Setting up email

How to setup email on
Outlook Express

Telkom

Getting to your Mail Account Settings

Mail Account settings can be located in Outlook Express by opening the Tools menu and selecting "Accounts."



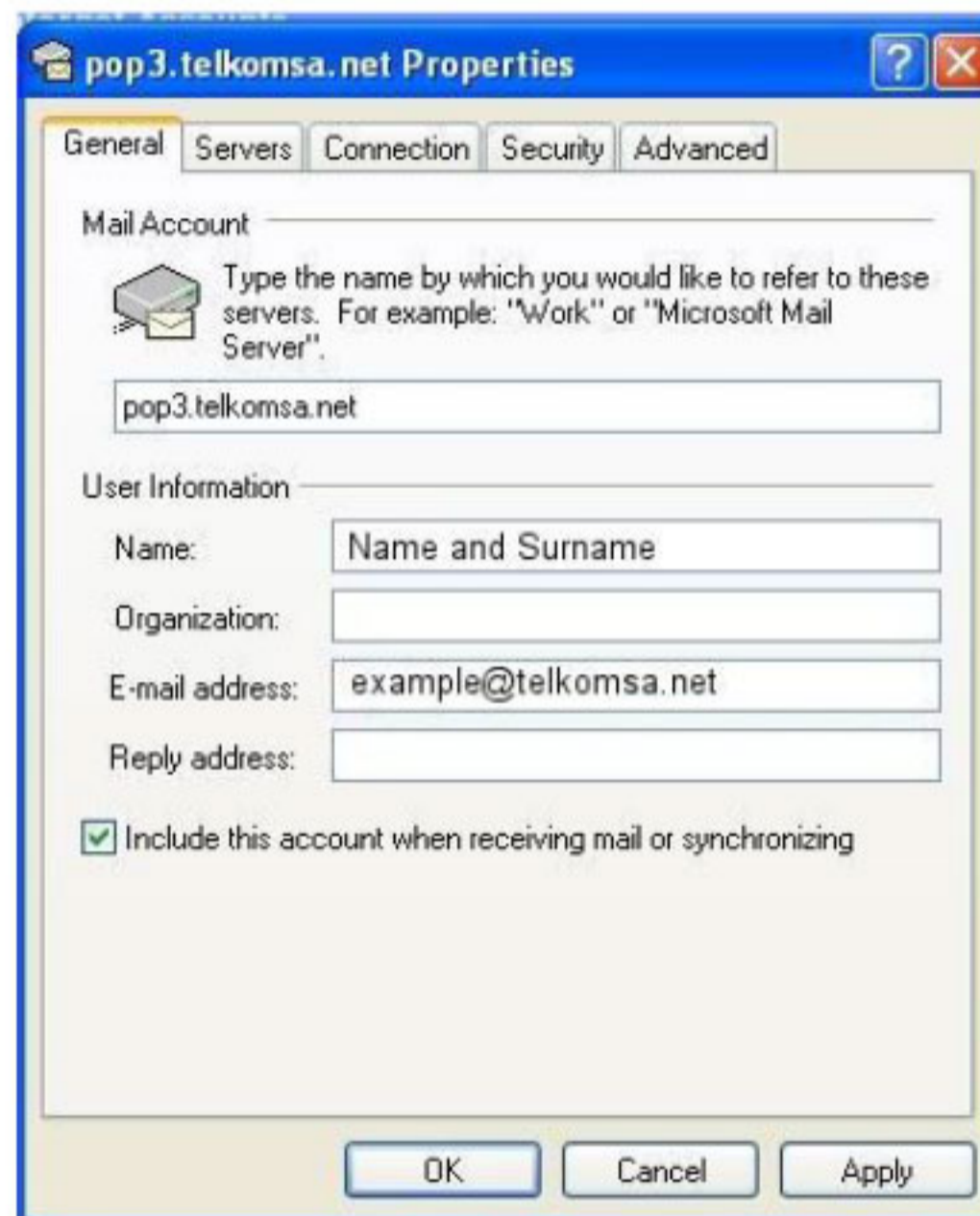
Accounts Window

To view or change your Mail Account settings, select "pop3.telkomsa.net" and click on the button labeled "Properties."



General Properties

Your general settings include your name, your organization name (if any), and your reply email address. Here you can also select whether this account will be included in a general "send and receive" action.



The image shows a Windows-style dialog box titled "pop3.telkomsa.net Properties". It has five tabs: "General", "Servers", "Connection", "Security", and "Advanced". The "General" tab is selected. The dialog is divided into two main sections: "Mail Account" and "User Information".

Mail Account: A text box contains "pop3.telkomsa.net". Above it is a small icon of a mail server and a note: "Type the name by which you would like to refer to these servers. For example: 'Work' or 'Microsoft Mail Server'".

User Information: This section contains four text boxes: "Name:" with "Name and Surname", "Organization:" (empty), "E-mail address:" with "example@telkomsa.net", and "Reply address:" (empty). Below these is a checked checkbox with the text "Include this account when receiving mail or synchronizing".

At the bottom of the dialog are three buttons: "OK", "Cancel", and "Apply".

Server Properties

Your server settings include the incoming mail server name (pop3.telkomsa.net), outgoing mail server name (smtp.dsl.telkomsa.net for ADSL and smtp.telkomsa.net for other connections), account name, and password.



Connection Properties

You can specify a single connection for Outlook Express to use. This is not necessary.



Security Properties

The default Security settings can be changed as you please. These options can be used for encryption and message signing.



Advanced Properties

The outgoing mail (SMTP) server operates on port 25. The incoming mail (POP3) server operates on port 110. Here you can optionally leave messages on the server.

