

HOME & BUSINESS

Security considerations

Things you need to know and consider
for your security on the internet

Telkom

MS Internet Explorer

Security Considerations

Step 1 of 4:

Username and passwords can be used on websites. Internet Explorer stores usernames and passwords for web sites which you have logged in to.

These usernames and passwords are stored in what is called Microsoft Protected Storage.



Step 2 of 4:

A digital certificate is an electronic document that establishes your credentials when doing business or other transactions on the web.

They are issued by a certificate authority in containing users name, expiration dates, a copy of the certificate's holders public key and the digital certificate of the certificate issuing authority so that the recipient can verify that the certificate is real.

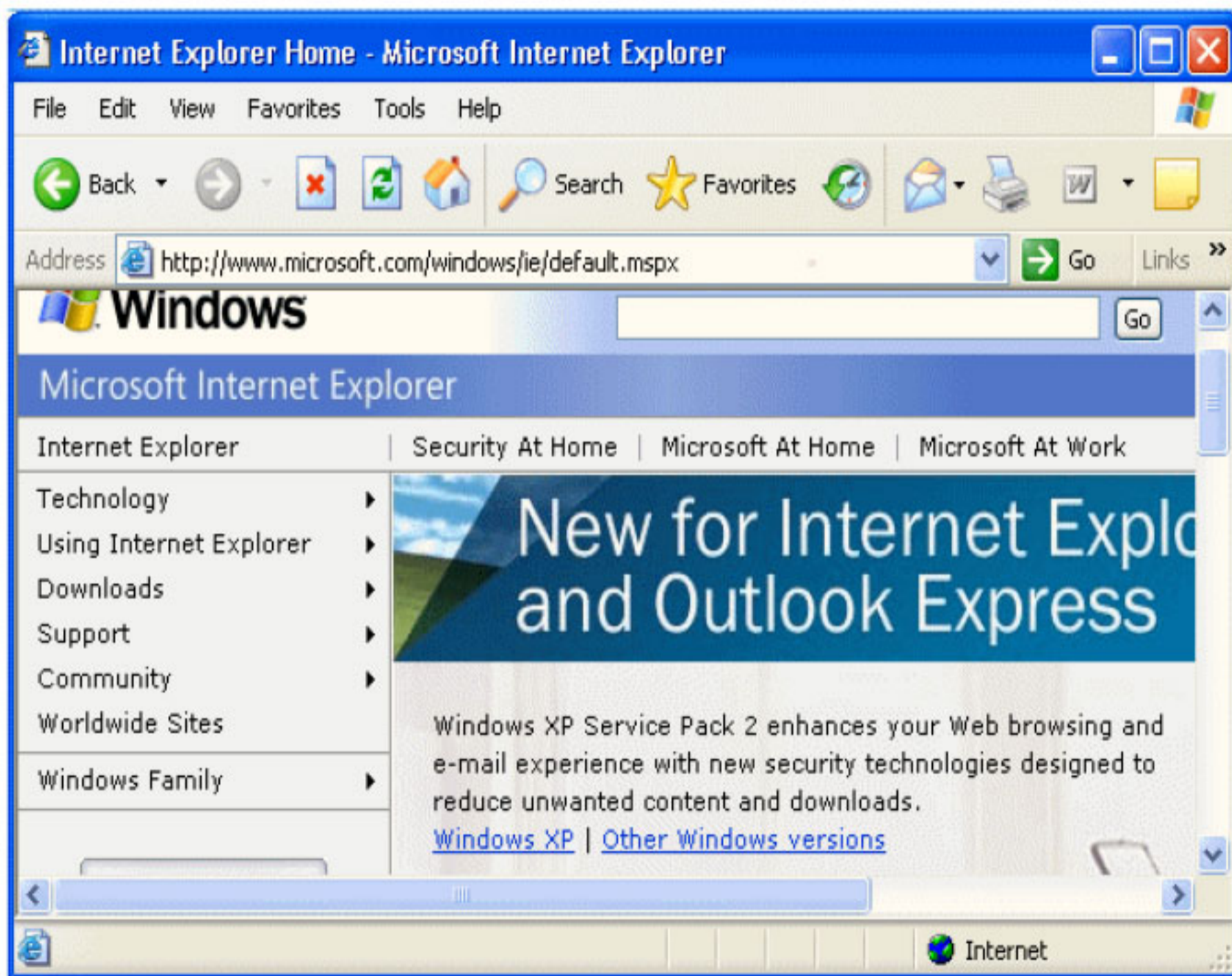


Step 3 of 4:

Prevents any non-authorized party from reading or changing data.

The level of protection provided by encryption is determined by an encryption algorithm.

In a brute-force attack, the strength is measured by the number of possible keys and the key size. For example, a Triple-Data Encryption Standard system (3 DES) uses 112-bit or 168-bit keys and, based on currently available processing power, is virtually immune to brute-force attacks.



Step 4 of 4:

A firewall is a set of related programs, located at a network gateway server that protects the resources of a private network from users from other networks.

Basically, a firewall, working closely with a router program, filters all network packets to determine whether to forward them toward their destination.

A firewall is often installed away from the rest of the network so that no incoming request can get directly at private network resources.

