

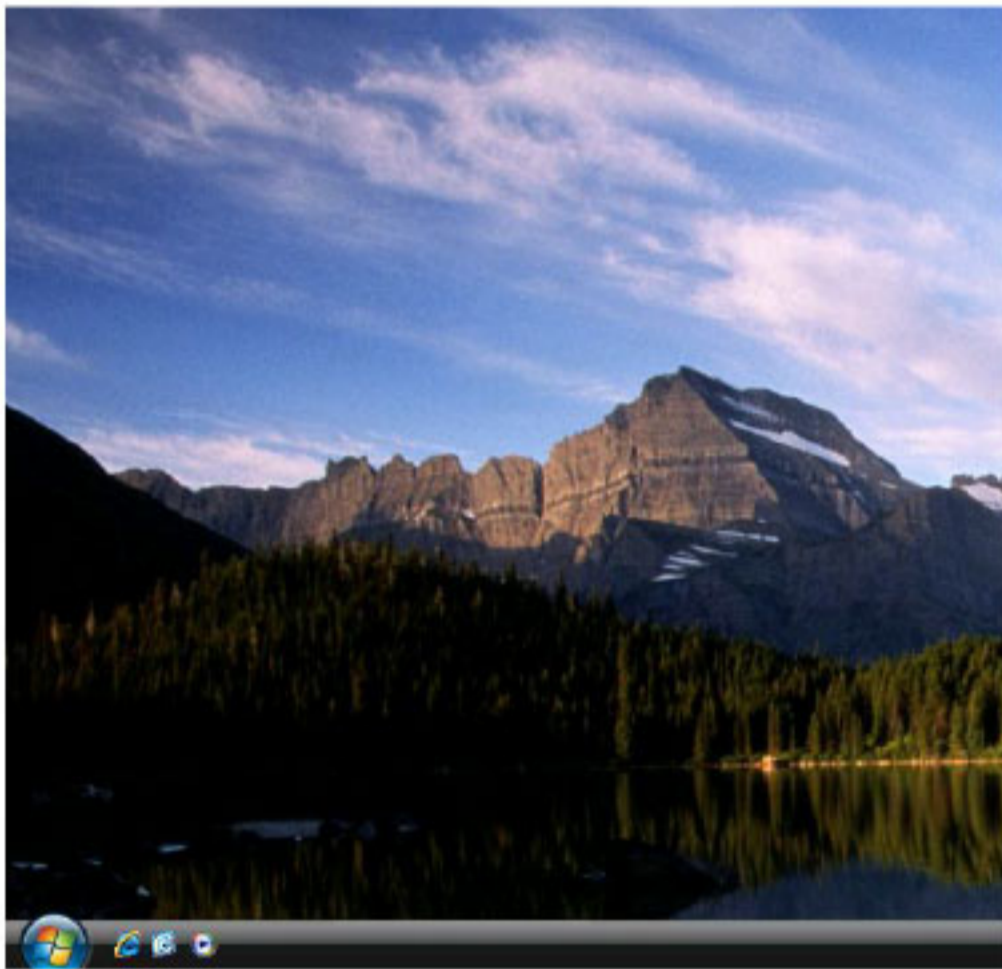
HOME & BUSINESS

Wimax Configuration

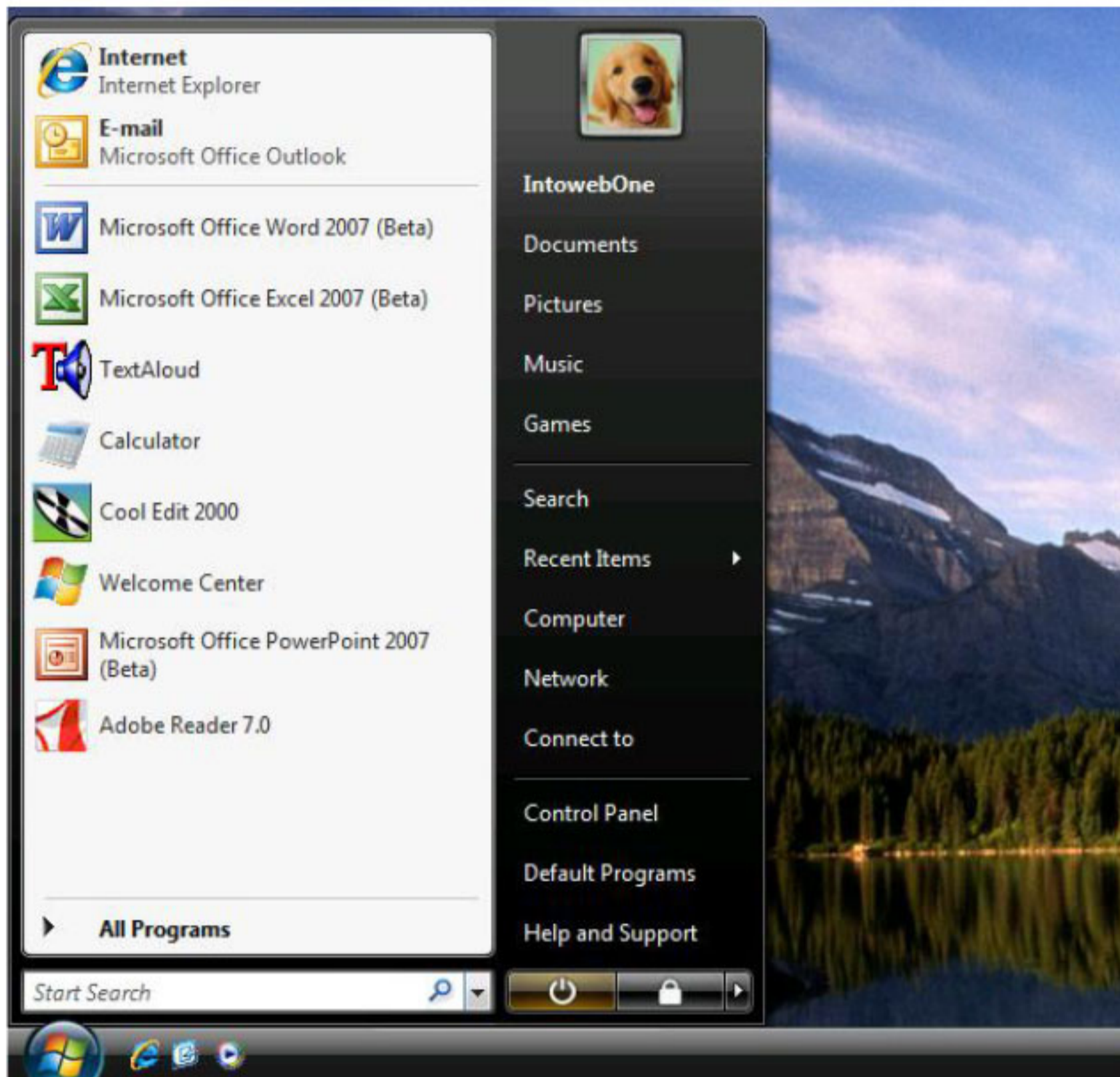
How to set up Wimax on
Windows Vista

Telkom

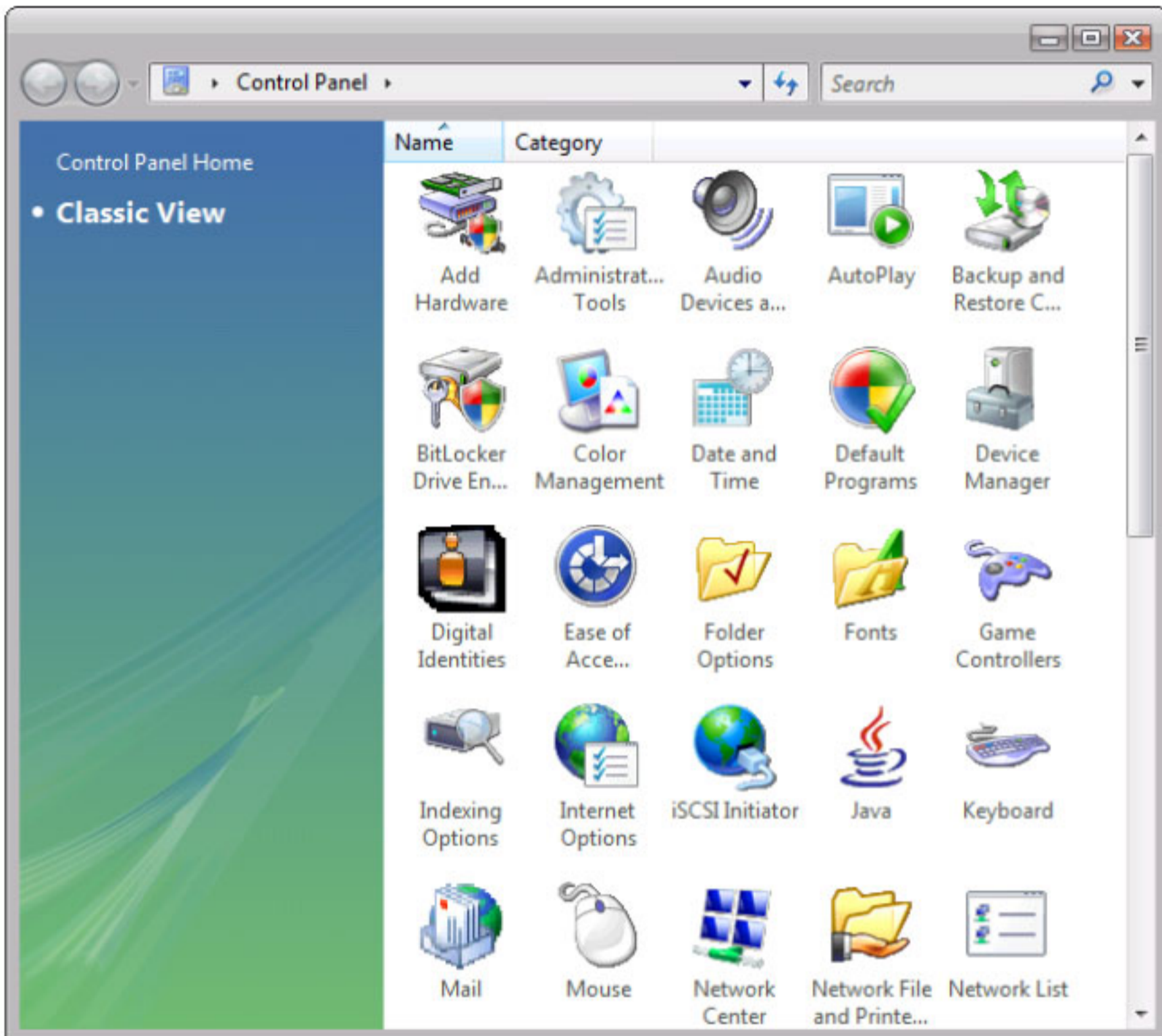
WIMAX configurations for Windows Vista



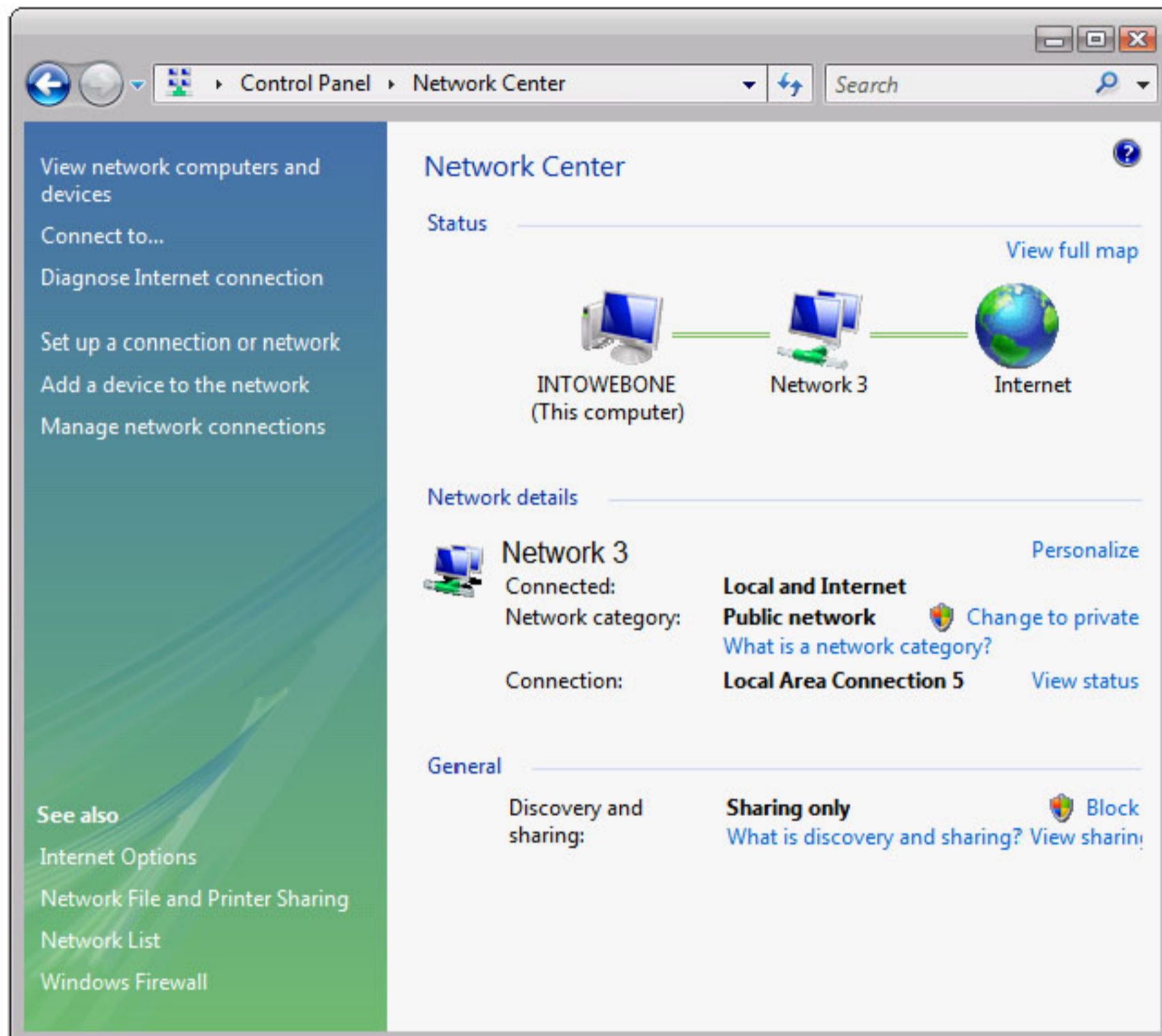
Click on the "Start" button.



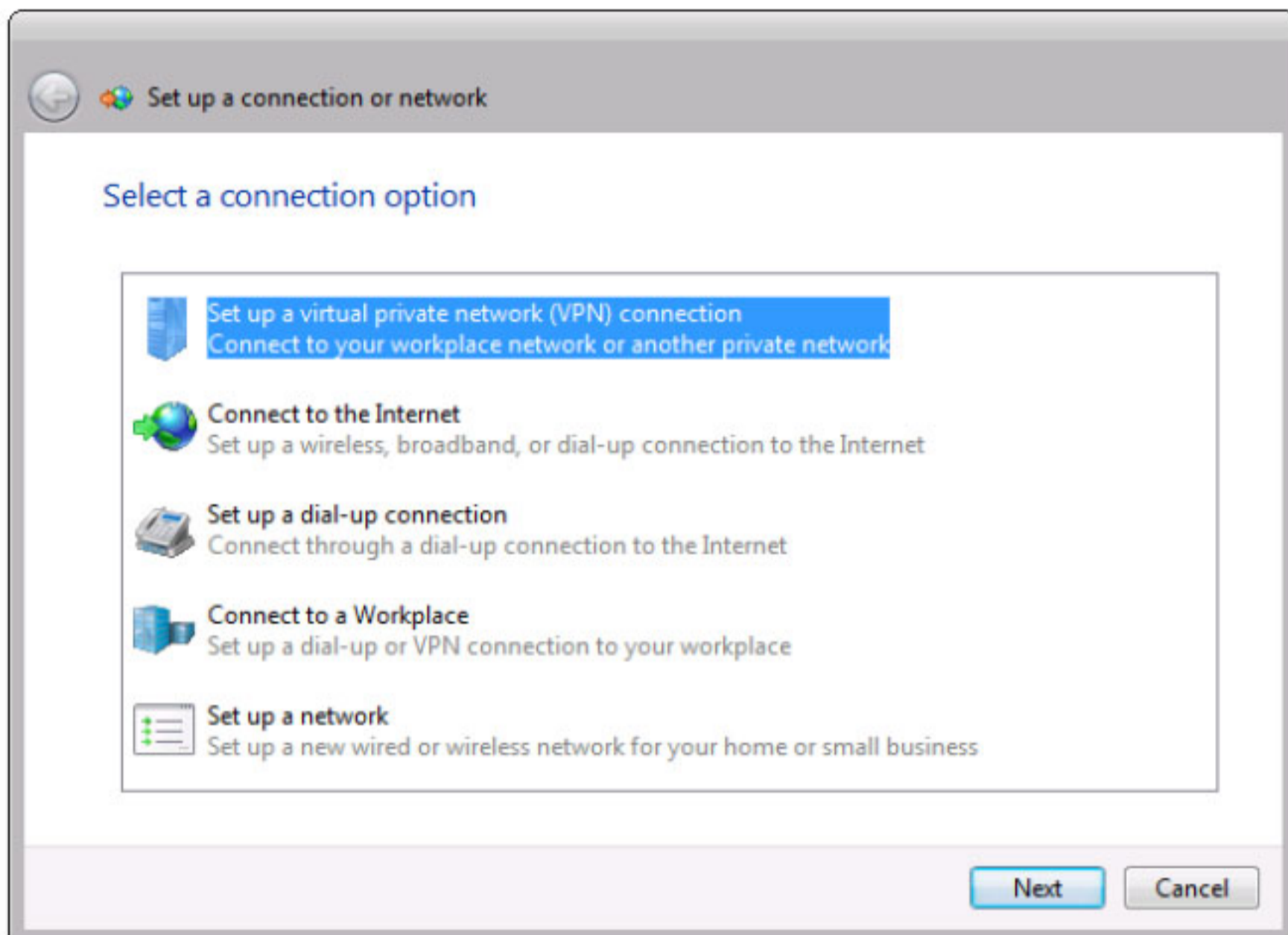
Click on "Control Panel".



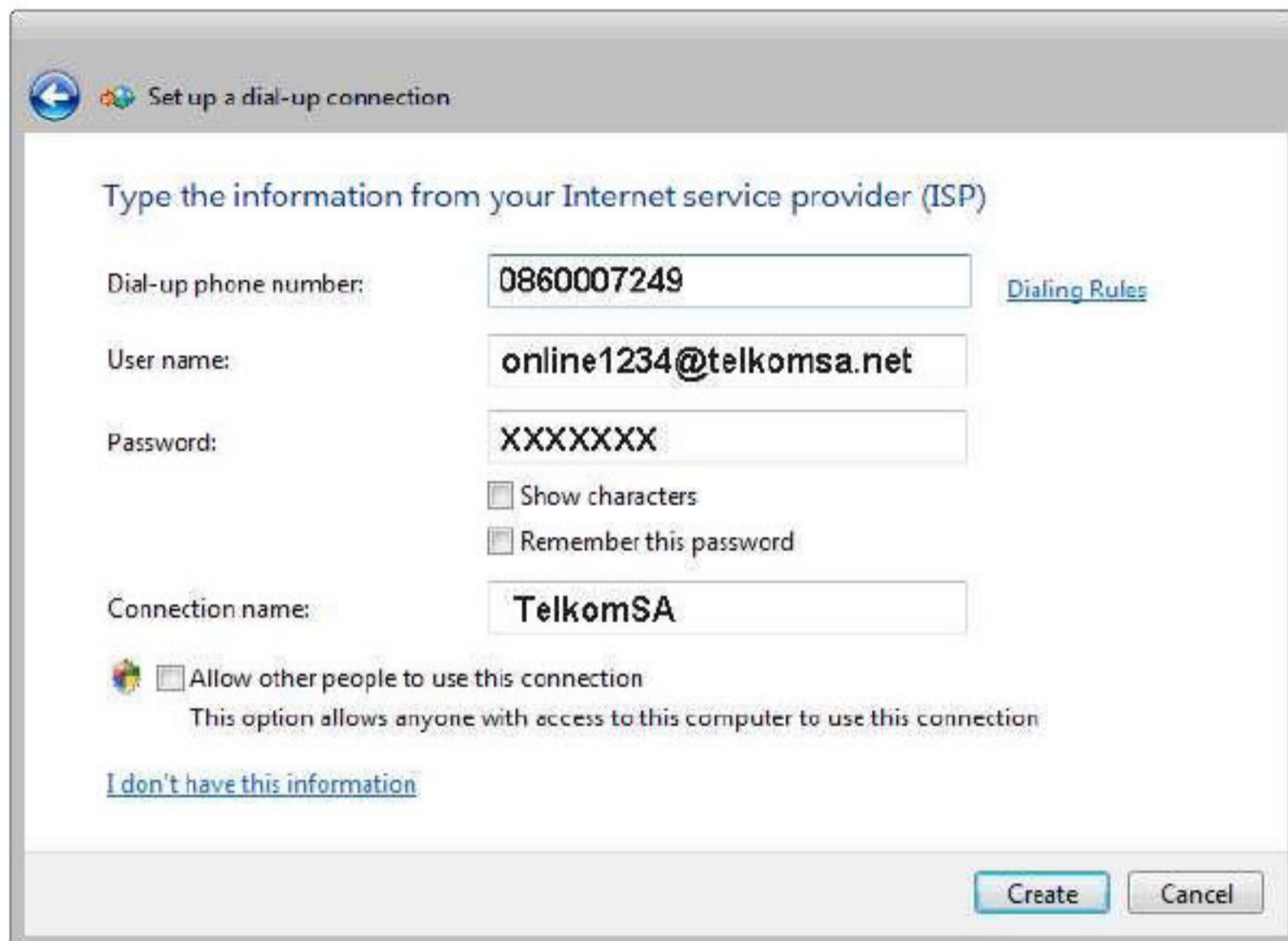
Double-click on "Network Center".



Click on "Set up a connection or network".



Double-click on "Set up a dial-up connection".



Set up a dial-up connection

Type the information from your Internet service provider (ISP)

Dial-up phone number: [Dialing Rules](#)

User name:

Password:

Show characters

Remember this password

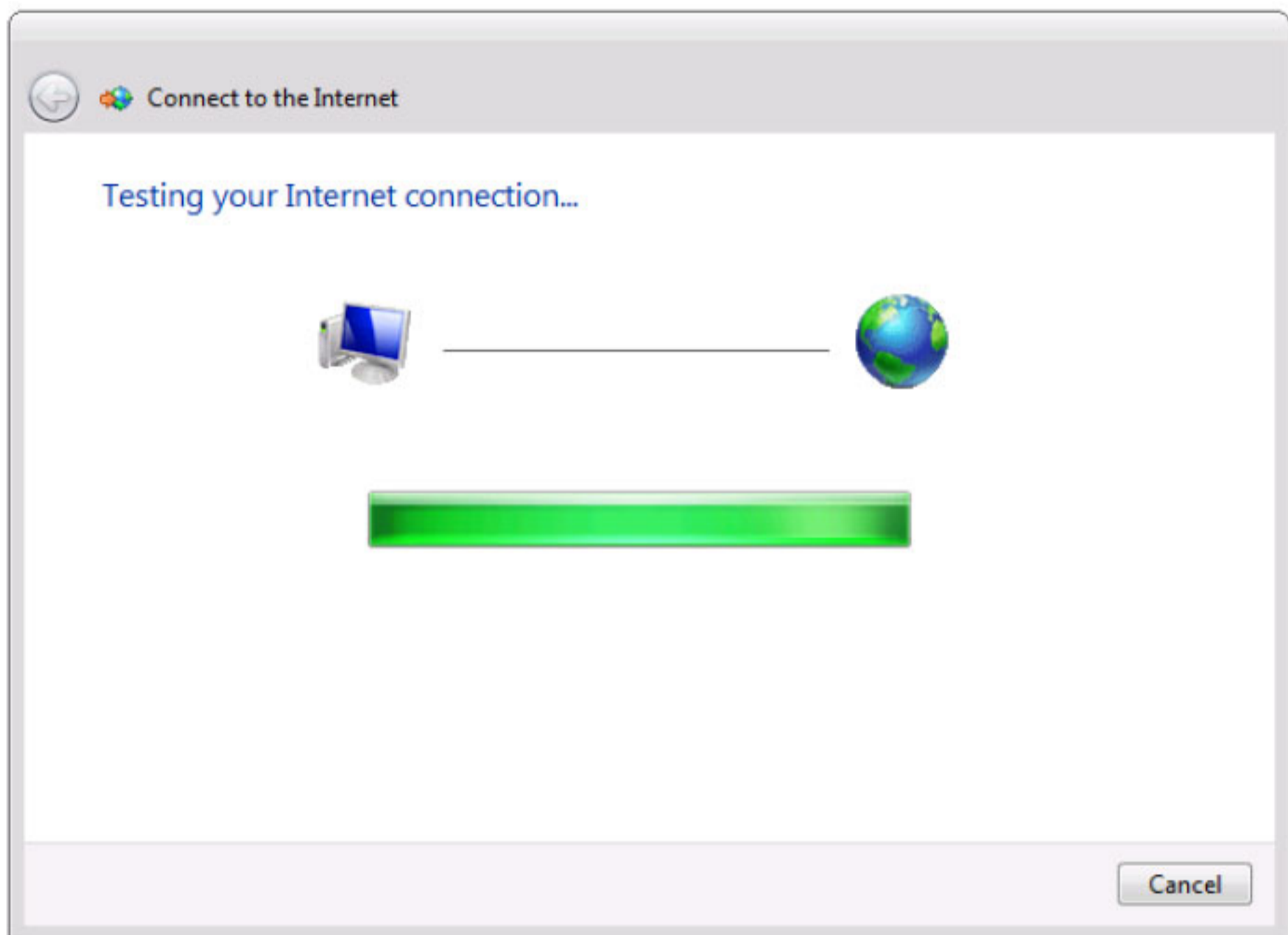
Connection name:

Allow other people to use this connection
This option allows anyone with access to this computer to use this connection

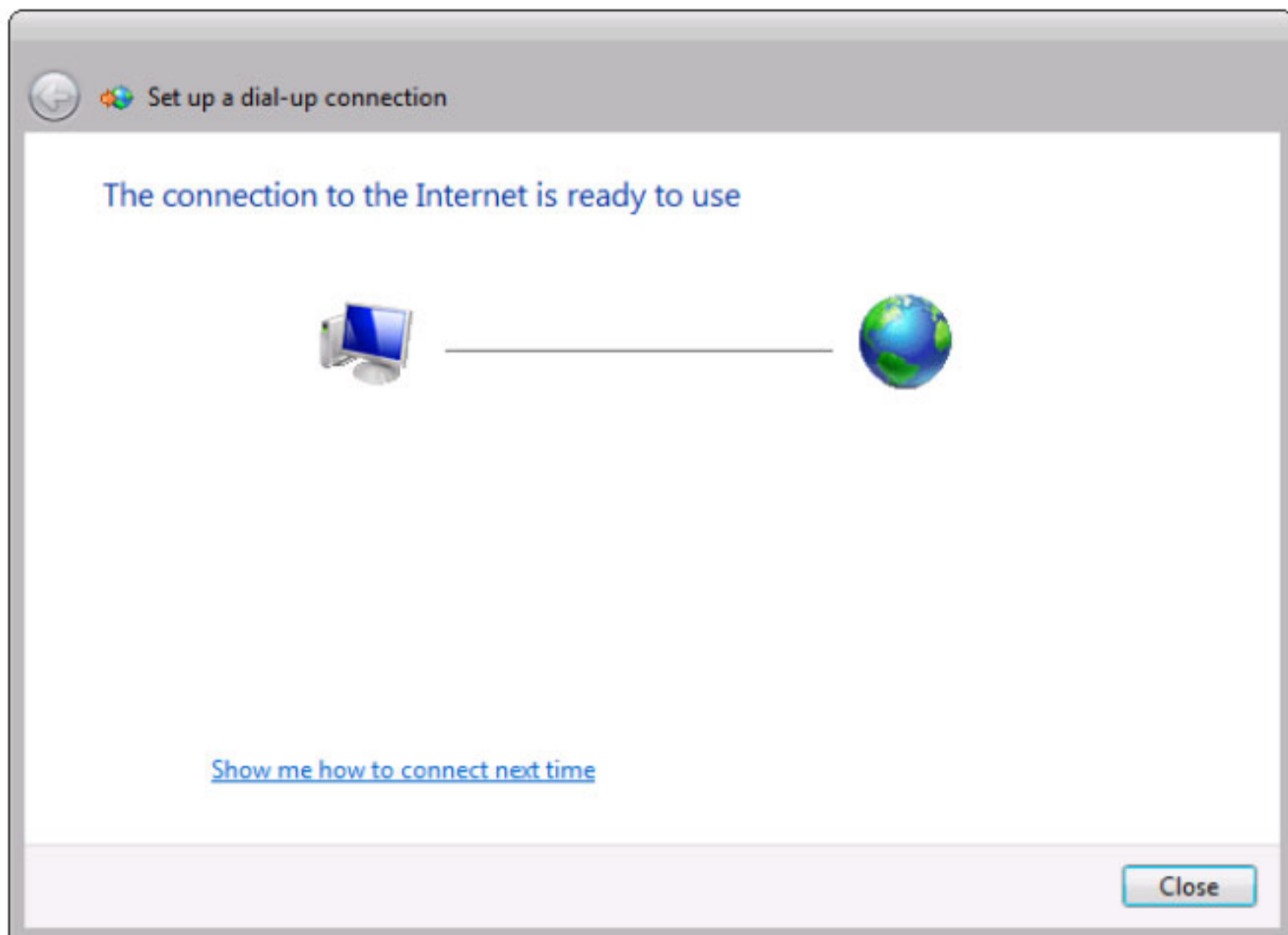
[I don't have this information](#)

1. In this input area type the number supplied to you by Telkom Internet as your dial in for Internet access. For example, type 0860007249.
2. In the input areas provided, type the username and password that was given to you by Telkom Internet.
3. You can check this checkbox if you want the characters that are typed in the "Password" input area to display.
4. You can check this checkbox to save the password you enter here. You will not be prompted to enter your password every time you connect to the Internet.
5. Enter the name of your ISP (Internet Service Provider) in the input area. For example, type Telkom
6. If multiple users are set up on the computer you can check this checkbox to allow other users to use this connection

7. Click on "Create".



Your connection setup will now be tested.



Your connection is set up and ready for use. Click on the "Close" button.

Connect TelkomDSL



User name:

Password:

Save this user name and password for the following users:

Me only

An other user who uses this computer